

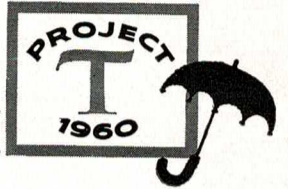
# THE BEACON BULLETIN

THE TRAVELERS INSURANCE COMPANIES

VOLUME I, NUMBER 2

News From The Home Office and The Field

JULY 8, 1960



## Portion of Oakland Office To Transfer To New Frisco Site

All underwriting, accounting and statistical divisions of the Oakland Branch Office Casualty-Fire Department will be merged with the San Francisco Branch Office effective January 1, 1961.

The move will provide accelerated handling of the functions to be transferred. The San Francisco Branch Office itself will be moved to new and modern quarters before the end of 1960.

Under the new plan, the Life, Accident & Health Agency Department, the Group Department, the Claim Department and other service facilities will continue to be maintained at each location.

"Agency forces and their clients in the Bay area will receive better service under this consolidation," a Travelers spokesman said. "By the use of modern tabulating equipment and more effective utilization of personnel, we will be able to reduce our expenses and continue our expansion program with the Bay area."

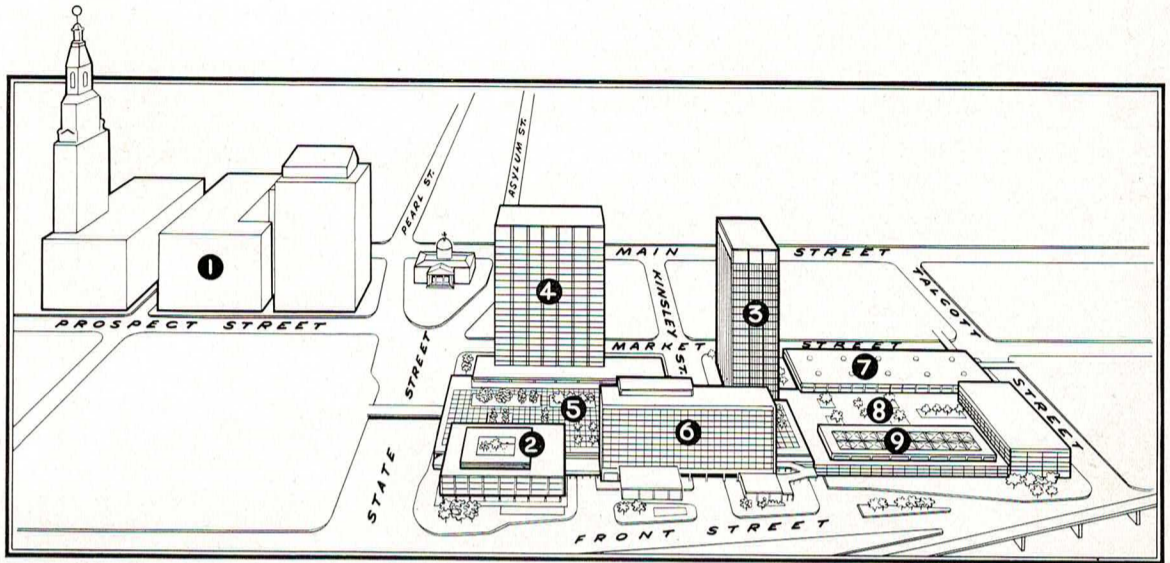
## The Travelers Grants \$25,000 For Education

Six Connecticut colleges and universities have received unrestricted corporate gifts totalling \$25,000 from The Travelers.

Announcing the gifts, President DeWitt pointed out that this is the fifth consecutive year in which grants have been made to the private institutions of higher learning within the state whose graduates have become associated with The Travelers.

President DeWitt pointed out that the Board of Directors voted the grants in recognition of the part such colleges and universities play in educating people who subsequently become associated with the Companies and that the grants are based on a formula which takes into consideration present employment experience.

Grants this year were these: Trinity College \$9,800; Yale University \$6,800; Wesleyan University, \$3,700; Fairfield University \$2,300; St. Joseph's College \$1,400, and Connecticut College \$1,000.



CONSTITUTION PLAZA'S 11 ACRES will one day resemble this artist's conception of the area to be developed in downtown Hartford. Our Home Office buildings (1) appear as a guide to your orientation of this view from the east. Broadcast House (2) is already under construction. 100 Constitution Plaza (3) will probably be the next building started, followed by the Connecticut Bank and Trust Company's new building (4). Two parking garages are planned (5) and (8), a hotel (6) and retail commercial buildings at (7) and (9).

## Constitution Plaza Excavation Begins

An 11-acre hole in the ground is being dug in downtown Hartford these days.

By the first week in September, it is expected the entire plot of real estate bounded by Front, Market, Talcott and State Streets will have been excavated. About 180,000 cubic yards of dirt and rock will have been removed in this preliminary step before starting the buildings of the Constitution Plaza area.

The Travelers-organized development corporation, Constitution Plaza, Inc., is headed by Finance Committee Chairman Gladden W. Baker, as its chairman of the board, and Vice President Roger C. Wilkins, Mortgage Loan Department as President and General Manager.

Mr. Wilkins says that orders for steel to build the 100 Constitution Plaza office building will be placed in mid-August.

The steel is expected to be delivered about the first of the year. In the meantime, construction will proceed on the underground garage at the southeast end of the tract. This garage will accommodate 628 cars. Later, at the north end of the tract, a garage for 1,156 cars will be built.

A 16-story building — 100 Constitution Plaza — will be the first on which construction will start, according to Mr. Wilkins. But the new home office of the Connecticut Bank and Trust Company at State and Market Streets, will not be far behind.

## Famed Site Planning Firm Retained for Constitution Plaza

Sasaki, Walker and Associates, internationally famous site planners and landscape designers, have been retained by Constitution Plaza, Inc. to lay out the raised platform of Constitution Plaza.

Head of the renowned firm is Hideo Sasaki, a native of Reedy, California, and a graduate of Harvard Graduate School of Design, of which he is now head.

Mr. Sasaki and his associates have worked on the design of numerous educational, commercial and cultural structures here and abroad.

Among them are campus redevelopment at Massachusetts Institute of Technology, the Harvard University of Medical School, the setting for the U. S. Embassy at Taipei, Formosa, luxury apartments at New York City's Washington Square, and University of Rhode Island's 15-year development program.

## Cafeteria Added To The Travelers Boston Building

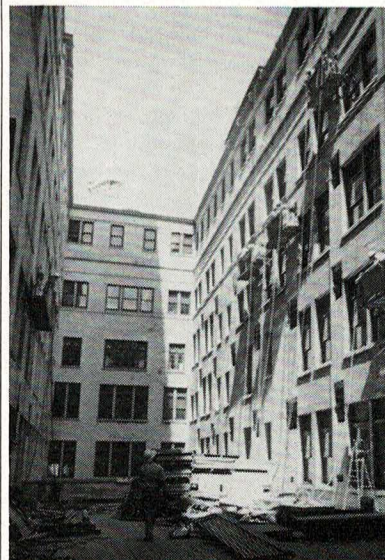
A standard self-service type cafeteria accommodating 170 people has been established on the ground floor of the new Travelers Insurance Building at 125 High St., Boston.

Wilbur's Restaurants have been assigned the responsibility of operating the cafeteria and the second floor executive suite, both designed by Boston architect Thomas Byrd Epps. Managing both operations for Wilbur's is Edward Lawler.

The cafeteria is decorated with maps of the world in four sections done in black lattice wrought iron with colored tile inserts. The all-tiled kitchen is furnished with stainless steel equipment.

The dining room area has a high ceiling with heavy piers of black walnut sheathing from floor to ceiling. The large glass windows on three sides are draped with canteloupe colored, checked full length draw curtains.

## Hot Weather Cooler



VIEW FROM THE COURT, at the sixth floor level, shows construction efforts in preparation for air conditioning of the 700 Main group of Home Office Buildings. This area will be closed in and the office space which results will be used for temporary relocation of personnel while adjacent areas are air conditioned.

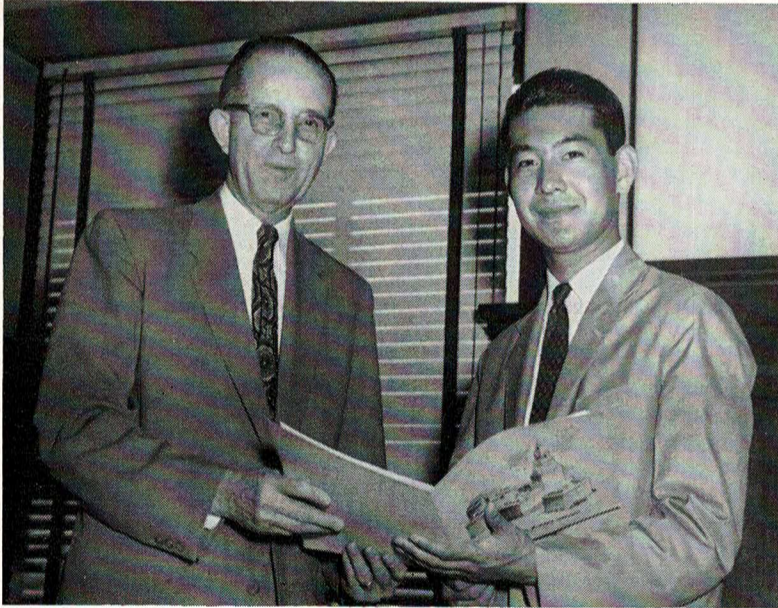
## Chamber Honors Two Travelers Executives For Civic Service

Two Travelers executives have been awarded Charter Oak Leadership Medals by the Greater Hartford Chamber of Commerce.

Gladden W. Baker, Chairman of the Finance Committee and Vice President Roger C. Wilkins, head of the Mortgage Loan Department, each received a medal at the Chamber's 161st annual business meeting, "for outstanding contributions to Hartford and the Greater Hartford areas."

The Chamber's board of directors also appointed Mr. Wilkins vice president of the Civic Development Department. He is president and general manager of Constitution Plaza, Inc., organized by The Travelers to develop the Front-Market Street area in downtown Hartford.

Mr. Baker is Chairman of the Board of Constitution Plaza, Inc.



GETTING ACQUAINTED with The Travelers during his recent visit to the Home Office, Masao Okazaki of Japan is pictured with Vice President Charles P. Jervey.

## Comments on Student Riots

## Visitor From Japan Studies Insurance Picture in U.S.A.

The majority of the students who took part in the recent riots in Japan were on the payroll of the Chinese Communist government.

This was the opinion expressed by Masao Okazaki, the son of a member of the Japanese Diet (Parliament) — the highest governing body in Japan — when he visited the Home Office of Travelers recently.

### In U.S. Two Years

Mr. Okazaki, who has been studying in this country for two years, spent a week and a half visiting the Home Office in an effort to increase his knowledge of insurance. More than 10 departments played

host to the young Japanese student and outlined activities in their area of the business.

Mr. Okazaki's father is also the president of the Dowa Fire and Marine Insurance Company of Osaka. The young Okazaki will be returning to Japan before the end of the year to assist his father in the insurance business.

### Japanese Riots

While discussing the recent demonstrations in Japan, Mr. Okazaki said that only 20 percent of the students taking part in the riots were really anti-American, anti-Kishi, and anti-security pact. "In (Continued on page 4)